






 **Mackies**
THE AUSTRALIAN PAN COMPANY



**GREAT BREAD
COMES FROM GREAT
PANS AND GREAT PANS
COME FROM MACKIES**

-  Excellent reputation
-  Made in Australia
-  Accountability
-  National support network
-  International coverage

est. 1946



MACKIES is Australia's most experienced designer and manufacturer of commercial baking pans and ancillary equipment. Mackies pans and trays are manufactured for maximum strength, highest accuracy and longest life. Our comprehensive range of stock items includes pan sets and covers, roll and bun trays, cooling racks and display stands.

We custom design Bakeware equipment for special requirements. Mackies custom designed Bakeware gives you flexibility in the choice of size, shape, material, finish and a huge range of features and options. Hundreds of die shapes and sizes are available.

Millions of bread products have been baked in Mackies pans, not only in

Australia, but all around the world. We have been responsible for many innovations that have helped bake better quality bread more profitably.

Ever since we started making bread pans in 1946, our purpose has been to provide you with quality Bakeware and exceptional service based on a thorough understanding of your needs and objectives. Simply put, our philosophy is to understand your needs and your business.

An investment in Mackies Bakeware and equipment is an investment in the best. Our experience and expertise helps achieve consistently high quality baked products as well as make a significant contribution to your operating efficiency and profitability.





Mackies products are in use throughout the world

1. Australia 2. Bahrain 3. Brunei 4. Canada 5. China 6. Egypt 7. Equatorial Guinea 8. France 9. Guam 10. Hong Kong 11. India 12. Indonesia 13. Iran 14. Ireland 15. Japan 16. Kuwait 17. Lebanon 18. Malaysia 19. Maldives 20. Mauritius 21. Mexico 22. Myanmar 23. New Zealand 24. Oman 25. Pacific Islands 26. Papua New Guinea 27. Philippines 28. Qatar 29. Russia 30. Saudi Arabia 31. Singapore 32. South Africa 33. South Korea 34. Spain 35. Sri Lanka 36. Taiwan 37. Thailand 38. United Arab Emirates 39. United Kingdom 40. USA 41. Vietnam 42. Zimbabwe.



THIS catalogue contains the Mackies range of stock pans, trays, racks and ancillary equipment. In addition, we can custom manufacture bakeware to your specifications.

All Mackies bakeware is processed with state-of-the-art pan conditioners and release coatings. Their various qualities work efficiently with a range of bakery products to give you flexibility of choice.

We are happy to advise you on the most appropriate finish for your bakery process and application.



Bakeware: meeting your demands is our objective.

Mackies bakeware experience grows and evolves as trends and needs change. We offer an extensive range of baking products for retail, and custom-made bakeware for industrial grade bakeries.

Hospitality: equipment compatible with high productivity and performance.

Gastronorm, Euro and various other size baking and multi-purpose trays, cooling wires & stainless steel racks for hospitality, catering & healthcare markets. The majority of baking trays include standard pan conditioners, release or Teflon coating.

Material Handling: heavy duty products for warehouses, engineering workshops, freight forwarders, produce markets and farms.

Dollies, heavy duty storage pallet cages & steel floor tiles help Mackies customers utilise space, assist ergonomics & reduce wear and tear on flooring. Tailor made solutions can be considered on various items to provide most economical outcome.



70 YEARS OF EXPERIENCE AND EXPERTISE

MACKIES BAKEWARE IS DESIGNED TO MAXIMUM STRENGTH, CONSISTENCY AND LIFESPAN

MACKIES pans, trays and associated equipment are manufactured from the highest quality materials available and maximising our value proposition to you.

To keep ahead of ever changing bakery conditions, Mackies is continually researching for better ways to give manufacturers the best Bakeware and equipment.

Mackies pans are conditioned and processed with absolute, state of the art, non-stick release coatings. Their various qualities are designed to work efficiently with a range of bakery products.

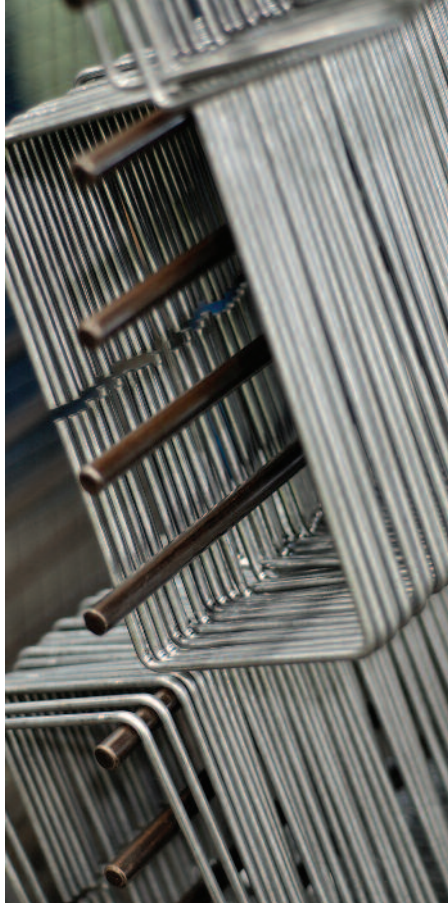
MackEZE®, developed over 25 years ago, has become one of the best

non-stick coatings in the world. Our products are guaranteed to give maximum releases over their designed life cycle.

The way in which Mackies assembles pans into sets varies from bakery to bakery. To arrive at the most appropriate pan assembly for your bakery, we take into consideration heat circulation of your ovens and overall dimensions and capacities of all your other equipment including provers, ovens, conveyers, mechanical handling and other mobile or fixed equipment.

Our engineers and designers are at your service to assist you in installing the best possible pan combination for the best results.





WE SPECIALISE IN CUSTOM DESIGNED BAKERY EQUIPMENT

At Mackies, we have over 530 die shapes and sizes to meet any requirements. If a particular die does not exist, Mackies will manufacture a die to suit your application.

Mackies customers can choose from a range of pan or tray options: from folded corner construction to deep drawn bread pans and trays, with drawn impression or locked seamed impression. We design and build the pans and trays to our customer's specifications so that there is a total integration with their plant processing lines.

All products are available with our customer's preferred non-stick release coatings such as: silicone glaze systems, our own

MackEZE® Fluoropolymer System, and our proprietary RKG2® exterior heat absorbing coating.

Together with you we can adapt and develop new coatings to suit your specific requirements. Our products are coated on our automated in-house silicone or fluoropolymer MackEZE® lines. We design and manufacture all sample products, our internal design team works with our in-house tool makers and engineers to give our customers the end-product they need.

With over 70 years of providing service to our industry, Mackies has earned the trust of its customers. When you order with us, you can expect products that have proven

their quality to customers of over 40 countries in the world.

The Mackies support team constantly travels worldwide. Through face to face interaction we assist you with the product development process, design, manufacturing, testing, final implementation and after sale service. Wherever you are, we are right there beside you.

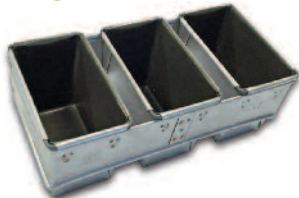


BREAD PAN SETS
CRAFT BREAD PANS
BREAD PAN LIDS
BAKING TRAYS
COOLING WIRES
RACK SYSTEMS



BREAD PAN SETS

340g Loaf Pan 046/3



Configuration: set of 3
Top Inside: 171x100
Base Outside: 153x89, **Depth:** 102
Overall Dimensions: 400x187x102
Material: Aluminised Steel
Finish: PANGLAZE® or MackEZE®
Options: Steam Release Holes

680g Loaf Pan 122B/3



Configuration: set of 3
Top Inside: 267x108
Base Outside: 253x98, **Depth:** 106
Overall Dimensions: 400x282x106
Material: Aluminised Steel
Finish: PANGLAZE® or MackEZE®
Options: Steam Release Holes

650g Loaf Pan 224/3



Configuration: set of 3
Top Inside: 236x127
Base Outside: 214x115, **Depth:** 120
Overall Dimensions: 455x250x120
Material: Aluminised Steel
Finish: PANGLAZE® or MackEZE®

450g Loaf Pan 109/3



Configuration: set of 3
Top Inside: 234x100
Base Outside: 221x90, **Depth:** 98
Overall Dimensions: 400x250x95
Material: Aluminised Steel
Finish: PANGLAZE® or MackEZE®
Options: Steam Release Holes

680g Loaf Pan 158/3



Configuration: set of 3
Top Inside: 281x115
Base Outside: 267x102, **Depth:** 115
Overall Dimensions: 400x297x115
Material: Aluminised Steel
Finish: PANGLAZE® or MackEZE®
Options: Fluting

900g Loaf Pan 059/3



Configuration: set of 3
Top Inside: 296x116
Base Outside: 277x106, **Depth:** 108
Overall Dimensions: 400x311x108
Material: Aluminised Steel
Finish: PANGLAZE® or MackEZE®

700g to 900g Loaf Pan 193B/2



Configuration: set of 2
Top Inside: 268x131
Base Outside: 252x124, **Depth:** 127
Overall Dimensions: 325x284x127
Overall Dimensions: 400x284x127
Material: Aluminised Steel
Finish: PANGLAZE® or MackEZE®

Drop on lids



Material: Aluminised Steel
Options: Slotted or unslotted.

Bread Pan Dollie BPD/2



Medium Corrugated Tank Loaf Pan T229/3



Configuration: set of 3
Top Inside: 229x102, **Depth:** 48
Overall Dimensions: 400x244x112
Material: Aluminised Steel
Finish: PANGLAZE® or MackEZE®

Vienna Loaf Pan Oval Round Edges WEV270/3-10



Configuration: set of 3
Top Inside: 270x114, **Depth:** 30
Overall Dimensions: 403x320x30
Material: Aluminised Steel
Finish: MackEZE®

Farmhouse Loaf Pan Deep Drawn FHS/4



Configuration: set of 4
Top Inside: 176x122
Base Outside: 164x110, **Depth:** 75
Overall Dimensions: 400x285x75
Material: Aluminised Steel
Finish: MackEZE®

BAKING TRAYS

Hamburger Roll Tray Shallow WEHP102-10



Configuration: 6 rows of 3
Top Inside: 102ø, **Depth:** 12
Overall Dimensions: 406x760x12
Material: Aluminised Steel
Finish: MackEZE®

Hamburger Roll Tray Round Deep WEHS102-10



Configuration: 6 rows of 3
Top Inside: 102ø, **Depth:** 23
Overall Dimensions: 406x760x23
Material: Aluminised Steel
Finish: MackEZE®

Hamburger Roll Tray Round Deep Staggered formation WEHS127-10



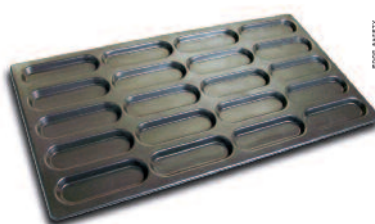
Configuration: rows of 5,4,5
Top Inside: 127ø, **Depth:** 25
Overall Dimensions: 406x760x25
Material: Aluminised Steel
Finish: MackEZE®

Hamburger Roll Tray Round Deep WEHP92-10



Configuration: 6 rows of 3
Top Inside: 92ø, **Depth:** 14
Overall Dimensions: 406x760x14
Material: Aluminised Steel
Finish: MackEZE®

Torpedo Roll Hot Dog Baton WETP175



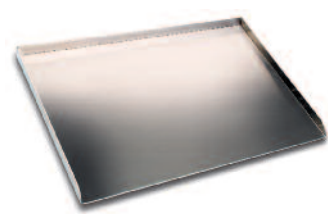
Configuration: 4 rows of 5
Top Inside: 175x58, **Depth:** 10
Overall Dimensions: 406x760x10
Material: Aluminised Steel
Finish: MackEZE®

Baton Roll Tray Batched in threes Round, Shallow ATP150G3



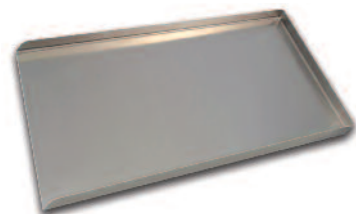
Configuration: 4 rows of 6
Top Inside: 150x51
Depth: 8
Overall Dimensions: 406x760x38
Material: Aluminised Steel
Finish: PANGLAZE®

Flat Baking Non-Perforated 3-sided Tray AL406



Overall Dimensions: 406x368x25
Material: Aluminium
Finish: Natural

Flat Baking Non-Perforated 3-sided Trays A1616R3 & A1816R3



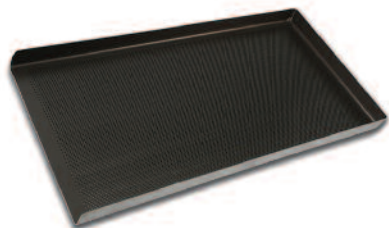
Overall Dimensions:
A1616R3: 406x732x25
A1816R3: 457x732x25
Material: Aluminium
Finish: Natural

Flat Baking Non-Perforated 3-sided Trays AT1616R3-10 & AT1816R3-10



Overall Dimensions:
A1616R3: 406x730x25
A1816R3: 457x730x25
Material: Aluminium
Finish: MackEZE®

**Flat Baking
Perforated 3-sided Tray
AT1616R3P-10 & AT1816R3P-10**



Overall Dimensions:
A1616R3P: 406x730x25
A1816R3P: 457x730x25
Material: Aluminium
Finish: MackEZE®

**Flat Baking
Non-Perforated 4-sided Trays
A1616R4 & A1816R4**



Overall Dimensions:
A1616R4: 406x737x25
A1816R4: 457x737x25
Material: Aluminium
Finish: Natural

**Flat Baking Non-Perforated
4-sided Tray A2916R4**



Overall Dimensions: 406x737x50
Material: Aluminium
Finish: Natural

**Seamless Non-Perforated
4 tapered sides & wired top edges
B5016N**



Overall Dimensions: 455x660x25
Material: Aluminium
Finish: Natural

**Commercial Non-stick Liner
Reusable non-stick baking sheet**



BRS-16 Width: 400
BRS-18 Width: 445
Length: 728
Finish: PTFE 3mil coated fabric
Pack size: 10 sheets or 30m roll

**Flat Trays Perforated with swage
SWT406 & SWT455**



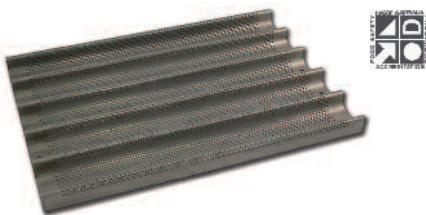
Overall Dimensions:
SWT406: 406x737x6
SWT455: 455x737x6
Material: Aluminium
Finish: MackEZE®

Non-stick Bake-Rite Mat



BRM 406: 395x725
BRM 457: 445x725
Material: Silicone

**Baguette Tray Perforated
ASV5AS-10**



No. of Impressions: 5
Stick Width: 65
Impression Depth: 35
Overall Dimensions in three sizes
ASV5-10: 400x737x37
ASV5450-10: 450x737x37
ASV5-26-10: 450x660x37
Material: Aluminised Steel
Finish: MackEZE®

**French Stick Tray Non-perforated
SV2-10**



No. of Impressions: 2
Stick Width: 65
Impression Depth: 35
Overall Dimensions: 180x385x37
Material: Aluminised Steel
Finish: MackEZE®

**Baguette Tray Perforated
ASV4AS-10**



No. of Impressions: 4
Stick Width: 75
Impression Depth: 35
Overall Dimensions: 400x737x37
Material: Aluminised Steel
Finish: MackEZE®

Friand Tray WEHS75



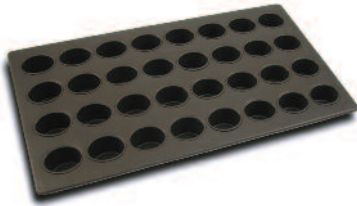
Configuration: 8 rows of 4
Overall Dimensions: 406x760x40
Cup Sizes:
Diameter Top: 75x56
Diameter Bottom: 65
Depth: 40
Material: Aluminised Steel
Finish: MackEZE®

Mini Muffin Tray WEHS47



Configuration: 10 rows of 5
Overall Dimensions: 406x760x25
Cup Sizes:
Diameter Top: 47ø
Diameter Bottom: 30ø
Depth: 25
Material: Aluminised Steel
Finish: MackEZE®

Regular Muffin Tray WEHS70



Configuration: 8 rows of 4
Overall Dimensions: 406x760x35
Cup Sizes: Diameter Top: 70ø
 Diameter Bottom: 55ø, Depth: 35
Material: Aluminised Steel
Finish: MackEZE®

Texas Muffin Tray WEHS88



Configuration: 6 rows of 3
Overall Dimensions: 406x760x45
Cup Sizes: Diameter Top: 88ø
 Diameter Bottom: 66ø, Depth: 45
Material: Aluminised Steel
Finish: MackEZE®

Texas Muffin Tray WEHS88/457



Configuration: 6 rows of 4
Overall Dimensions: 455x735x45
Cup Sizes: Diameter Top: 88ø
 Diameter Bottom: 66ø, Depth: 45
Material: Aluminised Steel
Finish: MackEZE®

Lunch Pie Round Plate Style PTR406-10



Configuration: 6 rows of 3
Impression Size: 114ø
Top Inside: 104ø, **Base Outside:** 69ø
Depth: 25, **Volume water:** 170g
Overall Dimensions:
 PTR406-13: 406x685x27
Material: Aluminised Steel
Finish: MackEZE®

Lunch Pie Round Plate Style PTR457-10



Configuration: 6 rows of 4
Impression Size: 114ø, **Top Inside:** 104ø
Base Outside: 69ø, **Depth:** 25
Volume water: 170g
Overall Dimensions: 457x685x27
Material: Aluminised Steel
Finish: MackEZE®

Lunch Pie Tray Round Upright Style PTRU406-10



Configuration: 6 rows of 3
Impression Size: 114ø, **Top Inside:** 104ø
Base Outside: 90ø, **Depth:** 25
Volume water: 170g
Overall Dimensions: 406x685x27
Material: Aluminised Steel
Finish: MackEZE®

Lunch Pie Tray Round Upright Style PTRU457-10



Configuration: 6 rows of 4
Impression Size: 114ø, **Top Inside:** 104ø
Base Outside: 90ø, **Depth:** 25
Volume water: 170g
Overall Dimensions: 457x685x27
Material: Aluminised Steel
Finish: MackEZE®

Lunch Pie Tray Square PTS406-10



Configuration: 7 rows of 3
Impression Size: 107, **Top Inside:** 97
Base Outside: 86, **Depth:** 26
Volume water: 200g
Overall Dimensions: 406x760x28
Material: Aluminised Steel
Finish: MackEZE®

Lunch Pie Tray Square PTS457-10



Configuration: 7 rows of 4
Impression Size: 107, **Top Inside:** 97
Base Outside: 86, **Depth:** 26
Volume water: 200g
Overall Dimensions: 457x760x28
Material: Aluminised Steel
Finish: MackEZE®

Lunch Pie Tray Oval PTO406-10 & PTO457-10



Configuration: 5 rows of 4
Impression Size: 98, **Top Inside:** 90
Base Outside: 78, **Depth:** 23
Volume water: 180g, **Overall Dimensions:**
 PTO406-10: 406x655x25
 PTO457-10: 457x665x25
Material: Aluminised Steel
Finish: MackEZE®

Lunch Pie Tray Football Round Ball PTF406-10 & PTF457-10



Configuration: 7 rows of 3, 5 rows of 4
Impression Size: 103, **Top Inside:** 87
Base Outside: 61, **Depth:** 28
Volume water: 180g, **Overall Dimensions:**
 PTF406-10: 406x745x32
 PTF457-10: 457x650x32
Material: Aluminised Steel
Finish: MackEZE®

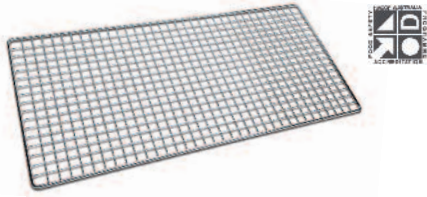
Party Pie Tray PTP406-10 & PTP457-10



Configuration: 11 rows of 5, 11 rows of 6
Impression Size: 65ø, **Top Inside:** 60ø
Base Outside: 40ø, **Depth:** 25
Volume water: 65g, **Overall Dimensions:**
 PTP406-10: 406x740x27
 PTP457-10: 457x740x27
Material: Aluminised Steel
Finish: MackEZE®

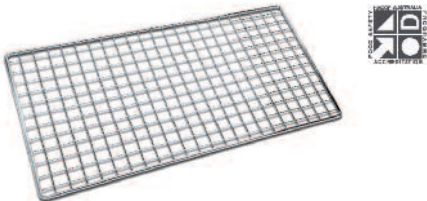
COOLING WIRES

Stainless Steel Cooling Wires TR Style Production Racks



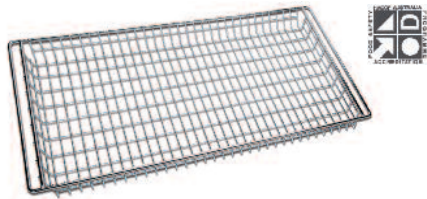
Overall Dimensions:
CW816SS: 406x737
CW818SS: 457x737
Finish: Stainless Steel

Wire Shelf For HB15 Racks



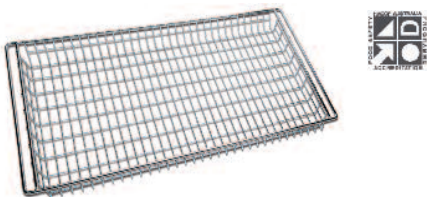
Overall Dimensions: 450x660
HBSSSQ: 457x914
HBSSQS: 457x914 (with stopper)
Finish: Stainless Steel

Stainless Steel Wire Basket shallow HBBSS50



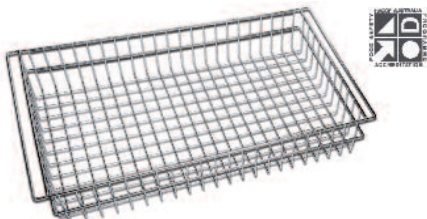
Overall Dimensions: 455x915x50
Finish: Stainless Steel

Stainless Steel Wire Basket shallow HB29182



Overall Dimensions: 457x737x50
Finish: Stainless Steel

Stainless Steel Wire Basket deep HBBSS150



Overall Dimensions: 455x915x150
Finish: Stainless Steel

Stainless Steel Wire Basket deep HB29186



Overall Dimensions: 457x737x150
Finish: Stainless Steel

SPECIALITY PANS

Variety Loaf Pans 046/1-02 & 109/1-02



Material: Aluminised Steel
Finish: PANGLAZE®, RKG2® or MackEZE®

Jumbo Loaf Pans 059/1-02 & 193B/1-02



Material: Aluminised Steel
Finish: PANGLAZE®, RKG2® or MackEZE®

Sandwich Loaf Pan 122B/1-02



Material: Aluminised Steel
Finish: PANGLAZE®, RKG2® or MackEZE®

Farmhouse Loaf Pan FHS/1-02



Material: Aluminised Steel
Finish: PANGLAZE®, RKG2® or MackEZE®

Slide on Lids SC/122B/1 & SC059/1



Material: Aluminised Steel
Finish: PANGLAZE®, RKG2® or MackEZE®

Cob/Boston Sponge Pan CBS178/1



Material: Aluminised Steel
Finish: PANGLAZE®, RKG2® or MackEZE®

Cob/Boston Sponge Pan CBS178/1-10



Material: Aluminised Steel
Finish: PANGLAZE®, RKG2® or MackEZE

Speciality Pans dimensions:

PAN CODE	Pan Top LENGTH	Pan Top WIDTH	Pan Depth
046/1-02	171	102	102
109/1-02	234	100	95
059/1-02	295	116	106
193B/1-02	268	131	127
122B/1-02	266	108	106
FHS/1-02	176	122	75
CBS 178/1	182Dia		40
CBS178/1-10	182Dia		40

*All measurements are in millimetres.
 Mackies reserves the rights to modify
 specification without notice.*

RACK SYSTEMS

Stainless Steel FLATPACK TRSS Production Racks



Front loading Racks for bread pans and roll trays fully adjustable to suit 16" (406mm) or 18" (457mm) trays.

TR12SS100 COLLAPS: 12 shelves
TR18SS COLLAPS: 18 shelves
TR22SS COLLAPS: 22 shelves

Overall Dimensions:

TR12SS100: 470x1830x740, **Runner Width:** 100

TR18SS: 470x1830x740, **Runner Width:** 75

TR22SS: 470x1830x740, **Runner Width:** 75

Finish: Stainless Steel
 Shipped flat packed

CUSTOM RACK COVERS

Custom/Premium Rack covers



FREE RACK COVER WITH ALL FLAT PACKED TRSS Model RACKS

Stainless Steel FLATPACK Production Rack TR12SS100



TR12SS100 COLLAPS 12 shelves:
Shelf Spacing: 136
Inside Width: adjustable 406 or 457
Overall Dimensions: (HWD assembled) 470x1830x740
Finish: Stainless Steel

Stainless Steel FLATPACK Production Rack TR18SS



TR18SS COLLAPS 18 shelves:
Shelf Spacing: 91
Inside Width: adjustable 406 or 457
Overall Dimensions: (HWD assembled) 470x1830x740
Finish: Stainless Steel

Stainless Steel FLATPACK Production Rack TR22SS



TR22SS COLLAPS 22 shelves:
Shelf Spacing: 74
Inside Width: adjustable 406 or 457
Overall Dimensions: (HWD assembled) 470x1830x740
Finish: Stainless Steel

Stainless Steel FLATPACK Cooling Rack Straight HB15SS



Shelves: 15 Straight, **Shelf Spacing:** 88
Capacity: 15 flat wires or 15 wire baskets
Overall Dimensions: (HWD assembled) 975x1750x455
Finish: Stainless Steel

Stainless Steel FLATPACK Tilting Display Rack HB5TSS



Shelves: 5 forward tilt, **Shelf Spacing:** 270
Capacity: 5 wire baskets
Overall Dimensions: (HWD assembled) 975x1785x455
Finish: Stainless Steel

Stainless Steel Custom Racks



Custom made racks manufactured for your bakery's specific products and processes.

Rack contents not included.

All measurements are in millimetres. Mackies reserves the rights to modify specification without notice.



LET'S GET SERIOUS ABOUT BAKING

CATERING BAKEWARE DESIGNED TO FIT YOUR OVEN

MACKIES Catering Bakeware range has been specifically developed to provide the culinary essentials for the catering and food service industry.

Ideal for catering, hospitality and food service providers, trays measure 400x600mm and are sized to suit European ovens.

All trays fit straight into our mobile flat pack racks for easy transportation and storage which saves bench space and assists workflow.

The entire Catering Bakeware range is HACCP Australia certified to give you the safest and best quality baked food products.

Millions of baked products have been produced from Mackies' pans and trays throughout the world. We have been supplying bakery equipment to overseas markets for over 20 years and have played a significant role in the development of a range of pan sizes that have become standard throughout many countries.

 **Mackies**
CATERING BAKEWARE

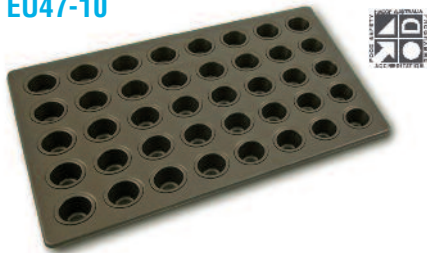


MUFFIN TRAYS
BAKING TRAYS
COOLING WIRES
FRENCH STICK TRAYS
PIE PALLETS
RACK SYSTEMS



EURO BAKEWARE

Mini Cupcake/Muffin Tray EU47-10



Configuration: 5 rows of 8
Overall Dimensions: 400x600x25
Top Inside: 47ø
Base Outside: 30ø
Depth: 25,
Weight: 2.5kg
Material: Aluminised Steel
Finish: MackEZE®

Medium Muffin Tray EUHS60-10



Configuration: 4 rows of 7
Overall Dimensions: 400x600x30
Top Inside: 60ø
Base Outside: 44ø
Depth: 29
Weight: 2.4kg
Material: Aluminised Steel
Finish: MackEZE®

Regular Muffin Tray EU70-10



Configuration: 4 rows of 6
Overall Dimensions: 400x600x35
Top Inside: 70ø
Base Outside: 55ø
Depth: 35
Weight: 2.4kg
Material: Aluminised Steel
Finish: MackEZE®

Jumbo Cupcake Muffin Tray EU88-10



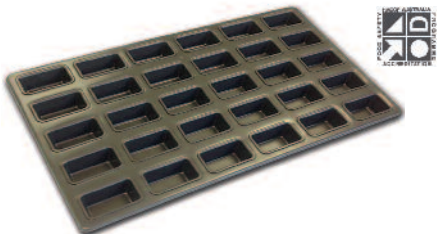
Configuration: 3 rows of 5
Overall Dimensions: 400x600x45
Top Inside: 88ø
Base Outside: 66ø
Depth: 45
Weight: 2.4kg
Material: Aluminised Steel
Finish: MackEZE®

Hamburger Tray EUAHP102-10



Configuration: 3 rows of 5
Overall Dimensions: 400x600x14
Top Inside: 102ø
Base Outside: 95ø
Depth: 13
Weight: 2.5kg
Material: Aluminised Steel
Finish: MackEZE®

Novelty Tray EUNOV-10



Configuration: 5 rows of 6
Overall Dimensions: 400x600x30
Top Inside: 76x47
Base Outside: 66x37
Depth: 30
Weight: 3.4kg
Material: Aluminised Steel
Finish: MackEZE®

**Multi-Purpose Non-Perforated
4 sided Baking Tray
EUTRAY-10**



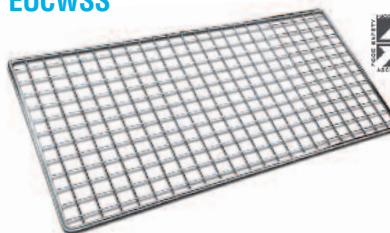
Overall Dimensions: 400x600x25
Depth: 25, **Thickness:** 2mm
Material: Aluminium
Finish: MackEZE®

**Multi-Purpose Perforated
4 sided Baking Tray
EUPTRAY-10**



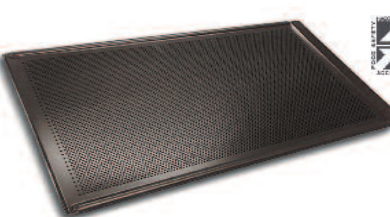
Overall Dimensions: 400x600x25
Depth: 25, **Thickness:** 2mm
Material: Aluminium
Finish: MackEZE®

**Stainless Steel Cooling wires
Oven Grid Rack
EUCWSS**



Overall Dimensions: 400x600
Depth: 11, **Weight:** 2.1kg
Outside wire: 8, **Cross wire:** 3
Finish: Stainless Steel

**Flat Perforated Baking Tray
Swage Edge
EUSWT-10**



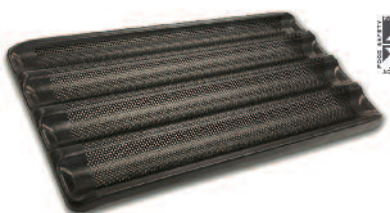
Overall Dimensions: 400x600
Material: Aluminium
Finish: MackEZE®

Aluminium Rack TR20AL



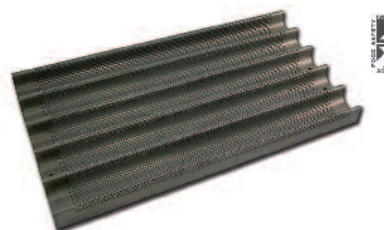
Comes flat packed
Overall Dimensions: 1760x415x660
Weight: 13.2kg
Capacity: 220kg
Internal Width Adjustable (DIY):
to suit 410 or 460 trays
Shelf Space: 75
Suitable for:
American Standard Trays: 460x660
Euro Trays: 400x600
Australian Baking Trays: 400 or 460x736
Finish: Aluminium

**Perforated Baguette
French Stick Tray EUASV4-10**



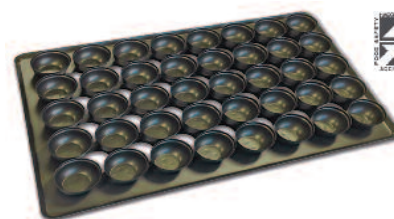
No of Impressions: 4
Overall Dimensions: 400x600x35
Width: 74, **Depth:** 23
Material: Aluminium
Finish: MackEZE®

**Perforated Baguette
French Stick Tray EUASV5-10**



No of Impressions: 5
Overall Dimensions: 400x600x35
Depth: 23
Material: Aluminium
Finish: MackEZE®

Party Pie Tray EUPTP-10



Configuration: 5 rows of 8
Overall Dimensions: 400x600x25
Top Inside: 61ø
Base Outside: 30ø
Depth: 38
Weight: 2.5kg
Material: Aluminised Steel
Finish: MackEZE®

Pie Tray EUR1WF-10



Configuration: 3 rows of 5
Overall Dimensions: 400x600x25
Top Inside: 98ø, **Base Outside:** 79ø
Depth: 34, **Weight:** 2.4kg
Material: Aluminised Steel
Finish: MackEZE®

GASTRONORM BAKEWARE

Mini Muffin Tray GN1/1 HS47-10



Overall Dimensions GN1/1: 530x325
Configuration: 5 rows of 8
Top Inside: 47ø, **Base Outside:** 30ø
Depth: 25, **Weight:** 2.5kg
Material: Aluminised Steel
Finish: MackEZE®

Regular Muffin Tray GN1/1 HS70-10



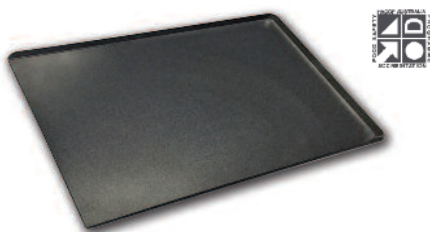
Overall Dimensions GN1/1: 530x325
Configuration: 3 rows of 6
Top Inside: 70ø, **Base Outside:** 55ø
Depth: 35, **Weight:** 2.4kg
Material: Aluminised Steel
Finish: MackEZE®

Texas Muffin Tray GN1/1 HS88-10



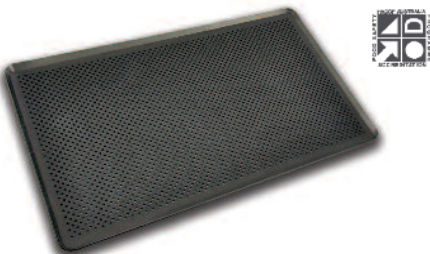
Overall Dimensions GN1/1: 530x325
Configuration: 2 rows of 4, 1 row of 3
Top Inside: 88ø, **Base Outside:** 66ø
Depth: 45, **Weight:** 2.4kg
Material: Aluminised Steel
Finish: MackEZE®

Multi-Purpose Non-Perforated Tray 3S GN1/1 3S-10 & GN1/2 3S-10



Overall: GN1/2: 325x265
Weight: 0.5kg
Depth: 9
Thickness: 2mm, 45° turn up on 3 sides
Overall: GN1/1: 530x325
Weight: 0.9kg
Depth: 9
Thickness: 2mm, 45° turn up on 3 sides
Material: Aluminium
Finish: TMackEZE®

Multi-Purpose Perforated Trays 4S GN1/1 P-10 & GN1/2 P10



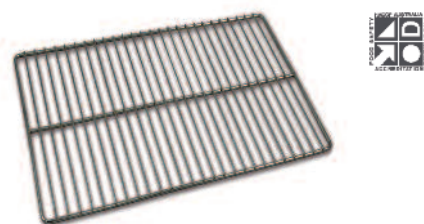
GN1/2P-10:
Overall Dimensions: 325x265
Weight: 0.5kg
Depth: 9
GN1/1 P-10:
Overall Dimensions: 530x325
Weight: 1kg
Depth: 9
Thickness: 2mm, 45° turn up on 3 sides
Material: Aluminium
Finish: MackEZE®

Non-stick Bake-Rite Mat



BRM G/N: 305x515
BRM EURO: 370x570
Material: Silicone

Stainless Steel Cooling wires Oven Grid Rack GastroCWSS



Overall Dimensions:
GN1/1: 530x325
Weight: 0.82kg, **Depth:** 8
Outside wire: 5, **Cross wire:** 3
Finish: Stainless Steel

Pie Pallet Round Upright GN1/1 R1WF-10



Overall Dimensions: 530x325x34
Configuration: 2 rows of 4, 1 row of 3
Top Inside: 98ø, **Base Outside:** 79ø
Depth: 34
Material: Stainless Steel
Finish: MackEZE®

Pie Pallet Party Pie GN1/1 PTP-10



Overall Dimensions: 530x325x25
Configuration: 4 rows of 7
Top Inside: 60ø, **Base Outside:** 40ø
Depth: 25
Material: Stainless Steel
Finish: MackEZE®

Stainless Steel Hospitality Glass Rack TR9SS



Set at 16" to fit bins
Shelf Spacing: 180
Overall Dimensions: 470x1830x740
Includes free rack cover
Includes Hospitality Pack (brake castors)
Optional Backstop Bar Available
Finish: Stainless Steel

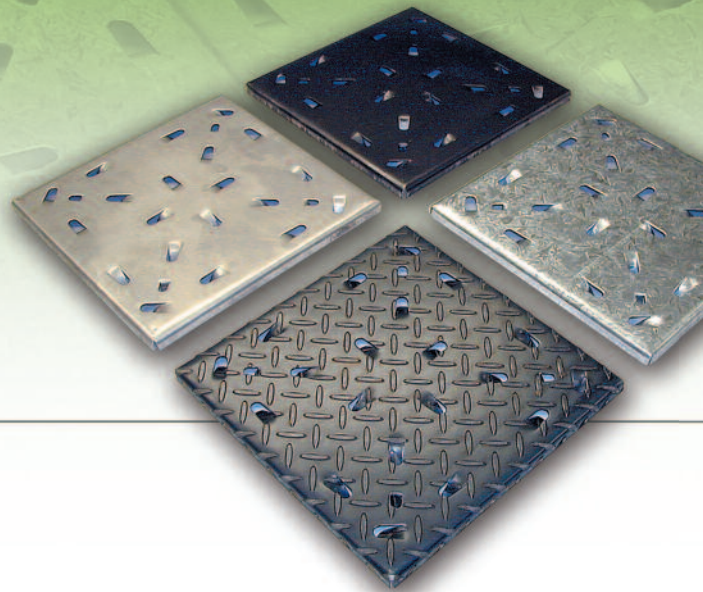
Stainless Steel Trolley Rack GN HB18SS



Comes flat packed
GN1/2 – Width: 382
GN1/1 – Width: 382
GN2/1 – Width: 586
Depth: 680, **Height:** 1650
Includes 2 sets of spacer bars for GN 1/2, GN 1/1 and GN 2/1
Finish: Stainless Steel
 Rack contents not included.

*All measurements are in millimetres.
 Mackies reserves the rights to modify specification without notice.*

HEAVY DUTY FLOOR TILES
 RACK SYSTEMS
 PLASTIC BASKETS
 BASKET TRANSPORT DOLLIES
 BREAD PAN DOLLIES



PLASTIC BASKETS

**Plastic Basket
 UBH/N**



Dimensions exterior: 694x604
 Dimensions interior: 662x578
 Inside Depth: 127
 Overall Depth: 152
 Colour: Gray

**Plastic Basket
 IH997**



Dimensions exterior: 709x458
 Dimensions interior: 674x420
 Inside Depth: 85
 Overall Depth: 105
 Colour: Gray

BASKET TRANSPORT DOLLIES

**Bread Pan Dollie
 BPD/2**



Configuration: Single Stack
Castors: 102ø polypropylene

Capacity: Suitable for all basket styles

Recommended stacking height: 20 per side
Finish: Mild steel, silver spray painted

**Basket transport Dollie
 BTD/2**



Configuration: Double Stack
Castors: 102ø polypropylene
Capacity: Suitable for all basket styles
 Recommended stacking height: 20 per side
Finish: Mild steel, silver spray painted
Configuration: Double Stack

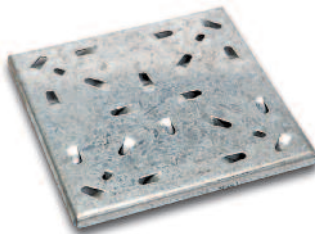
HEAVY DUTY FLOOR TILES

Stainless Steel Floor Tiles B430SS



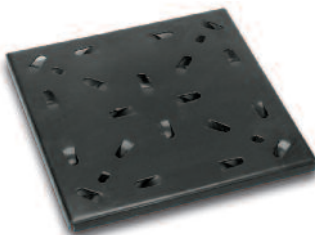
Dimensions: 305x305x20
Material: 2.5 thick Stainless Steel
Weight: 2kg
 Available in packs of 18 (1.674 sqm)
Installation instructions: available on request

Galvanised Steel Floor Tiles B430GAL



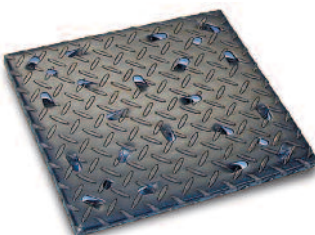
Dimensions: 305x305x20
Material: 2.5 thick Galvanised Steel
Weight: 2kg
 Available in packs of 18 (1.674 sqm)
Installation instructions: available on request

Mild Steel Floor Tiles B430MS



Dimensions: 305x305x20
Material: 2.5 thick Mild Steel
Weight: 2kg
 Available in packs of 18 (1.674 sqm)
Installation instructions: available on request

Checkerplate Floor Tiles B430CP



Dimensions: 305x305x20
Material: 2.5 thick Checkerplate Mild Steel
Weight: 2kg
 Available in packs of 18 (1.674 sqm)
Installation instructions: available on request

RACK SYSTEMS

Stainless Steel FLATPACK TRSS Production Racks



Front loading for bread pans fully adjustable to suit 16"(406mm) or 18" (457mm) trays.

TR12SS100 COLLAPS 12 shelves:

Shelf Spacing: 136
Inside Width: adjustable 406 or 457
Runner Width: 100

Overall Dimensions:
 (HWD assembled) 470x1830x740

TR18SS COLLAPS 18 shelves:

Shelf Spacing: 91
Inside Width: adjustable 406 or 457
Runner Width: 75

Overall Dimensions:
 (HWD assembled) 470x1830x740

TR22SS COLLAPS 22 shelves:

Shelf Spacing: 74
Inside Width: adjustable 406 or 457
Runner Width: 75

Overall Dimensions:
 (HWD assembled) 470x1830x740

Finish: Stainless Steel

Optional Backstop Bar Available

**FREE RACK COVER WITH ALL
 FLAT PACKED TRSS Model RACKS**

Stainless Steel Hospitality Glass Rack TR9SS



Set at 16" to fit bins, **Shelf Spacing:** 180

Overall Dimensions: 470x1830x740

Includes free rack cover

Includes Hospitality Pack (brake castors)

Optional Backstop Bar Available

Finish: Stainless Steel

Stainless Steel FLATPACK Cooling Rack Straight HB15SS



Shelves: 15 Straight, **Shelf Spacing:** 88
Capacity: 15 flat wires or 15 wire baskets
Overall Dimensions: 975x1750x455
Finish: Stainless Steel

Stainless Steel FLATPACK Tilting Display Rack HB5TSS



Shelves: 5 forward tilt, **Shelf Spacing:** 270
Capacity: 5 wire baskets
Overall Dimensions: 975x1785x455
Finish: Stainless Steel

Stainless Steel Custom Racks



Custom made racks manufactured for your bakery's specific products and processes.

Rack contents not included.

*All measurements are in millimetres.
 Mackies reserves the rights to modify specification without notice.*

We Specialize in Teflon® Coatings

AST is a premier Chemours (former DuPont) Licensed Industrial Applicator, specializing in applying Teflon, Halar, Kynar and other high performance functional coating systems.



AST will select and stock the correct raw materials specific to each industry's end use applications.

Our coatings are specifically designed for various industry uses. For example, our non-stick specialised Coating Systems used in the Baking Industries are optimised for superior release and wear properties. Coatings used by the chemical Industry are optimised for Chemical Resistance and Permeation Resistance. We work with you to develop coating solutions to help you overcome any challenges you may face. The following are some of the more common requirements we can help you achieve.

Outstanding Properties of Fluoropolymers



Non-stick



Low friction



Non wetting



Heat resistance



Unique electrical properties



Cryogenic stability



Chemical resistance



AUSTRALIAN SURFACE TREATMENTS



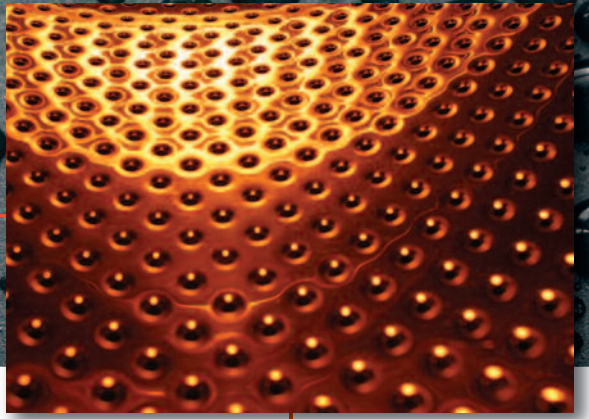
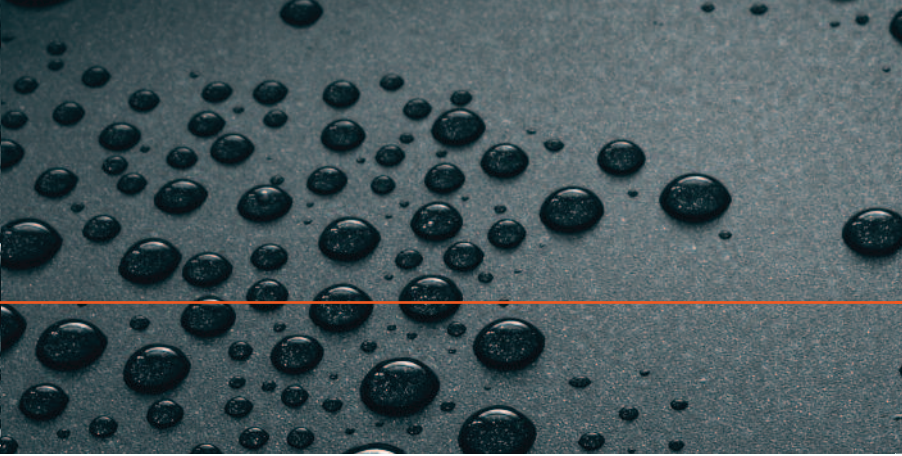
A **Mackies** OWNED COMPANY

We are the Market Leader in applying coatings for the following Industries:

- Food, Cheese and Dairy Industries
- Industrial & Retail Bakeries
- Rubber & Chemical Processors
- Packaging & Plastics Production
- Material Handlings and conveyors
- Valves & Pump Manufacturers
- Mining & Pharmaceutical
- General Engineering & Steel fabricators
- Automotive, Textile & Copier Machine Rollers
- Heat Sealing Equipment
- Vacuum equipment
- Fan Pumps
- Kitchenware
- Injection Tooling

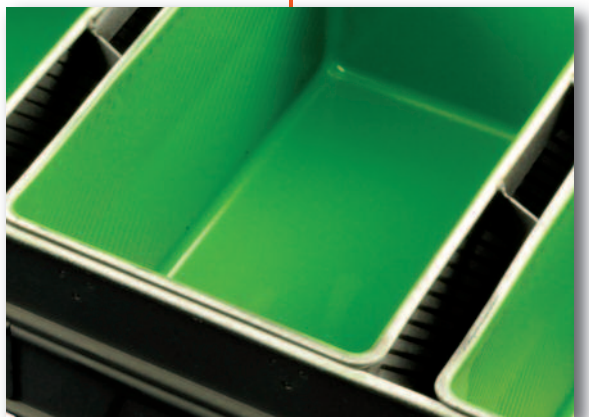
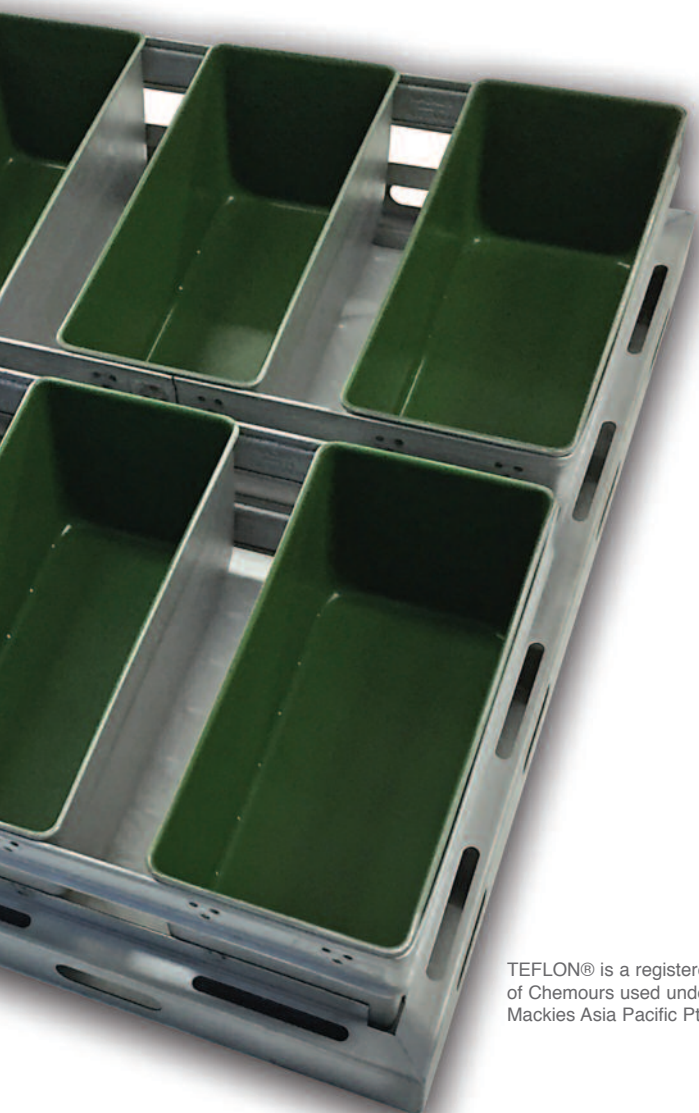
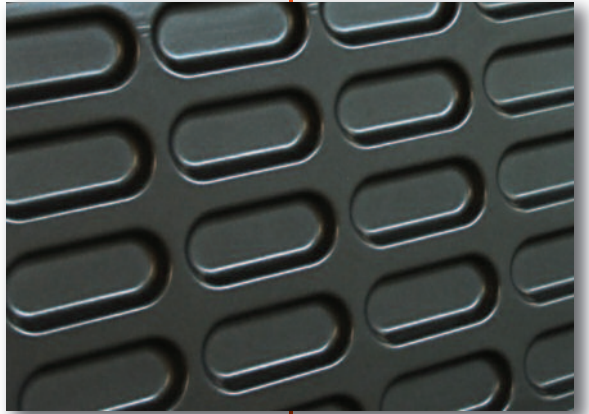
Types of equipment we coat:

- Chemical Tanks
- Pharmaceutical Tanks
- Pressure Vessels
- Adhesive Pans
- Ink Pans
- Baking Pans
- Rollers, Hoppers & Seal Bars
- Splash Guards
- Agitators & Parts up to 3x6x2.5m long



Teflon® Fluoropolymer coatings achieve maximum releases, making Teflon® the ultimate non-stick system for food and the baking industries.

This commercial quality coating is the result of decades of worldwide research and development. The coatings are applied using our proprietary process known as Mackeze® which is available exclusively through Mackies Asia Pacific.



TEFLON® is a registered trademark of Chemours used under license by Mackies Asia Pacific Pty Ltd.

40 Killara Rd, Campbellfield, Victoria 3061
PO Box 121, Fawkner, Victoria 3060
Tel: 03 9357 0297 Fax: 03 9357 0304
Email: sales@astau.co
Website: www.astau.co



**MACKIES IS
THE TRUSTED
GLOBAL SUPPLIER
OF QUALITY BAKEWARE
AND STORAGE
EQUIPMENT TO CATERING,
RETAIL AND INDUSTRIAL
BAKING INDUSTRY**



contacts mackies asia pacific

**MACKIES
CATALOGUE EDITION 4**

**Head Office & Manufacturing:
Sydney Australia**

112-116 Canterbury Road
Bankstown NSW 2200

PO Box 296
Padstow NSW 2211

Tel: (02) 9708 2177

Fax: (02) 9708 2155

Email: sales@mackies.com.au

Web: www.mackies.com.au

Despatch Fax: (02) 9708 2588

International:

Tel: +61 (07) 4059 0688

Fax: +61 (07) 4059 0633

Email: willr@mackies.com.au

Mobile: +61 419 208 469

Branch Offices Australia:

Melbourne VIC

PO Box 121
Fawkner VIC 3060

Tel: (03) 9434 3477

Fax: (03) 9357 0304

Mobile: 0417 236 838

Brisbane QLD

PO Box 8240
Gold Coast Mail Centre
Bundall QLD 9726

Tel: (07) 5504 7720

Fax: (07) 5504 7721

**Branch Office New Zealand:
Auckland**

150H Harris Road
East Tamaki Auckland 2013 NZ

PO Box 204320
Highbrook 2161 NZ

Tel: +64 (09) 274 5278

Tel: +64 (09) 274 5528

Fax: +64 (09) 274 6980

Email: chrism@mackies.net.nz

Web: www.mackies.net.nz

Free Call: 0800 MACKIES
(0800 6225437)



Innovation | Expertise | Trust



AUSTRALIA: Head Office & Manufacturing 112-116 Canterbury Rd Bankstown NSW 2200
Tel: 02 9708 2177 **Fax:** 02 9708 2155 **Email:** sales@mackies.com.au **Website:** www.mackies.com.au

NEW ZEALAND: 150H Harris Road East Tamaki Auckland 2013 **Free call:** 0800 MACKIES (0800 6225437)
Tel: +64 (09) 274 5278 **Fax:** +64 (09) 274 6980 **Email:** chrism@mackies.net.nz **Website:** www.mackies.net.nz

INTERNATIONAL: **Tel:** +61 (07) 4059 0688 **Fax:** +61 (07) 4059 0633 **Email:** willr@mackies.com.au **Mobile:** +61 419 208 469

MACKIES CATALOGUE EDITION 4